



■ N-Lited

VELUX FONDEN



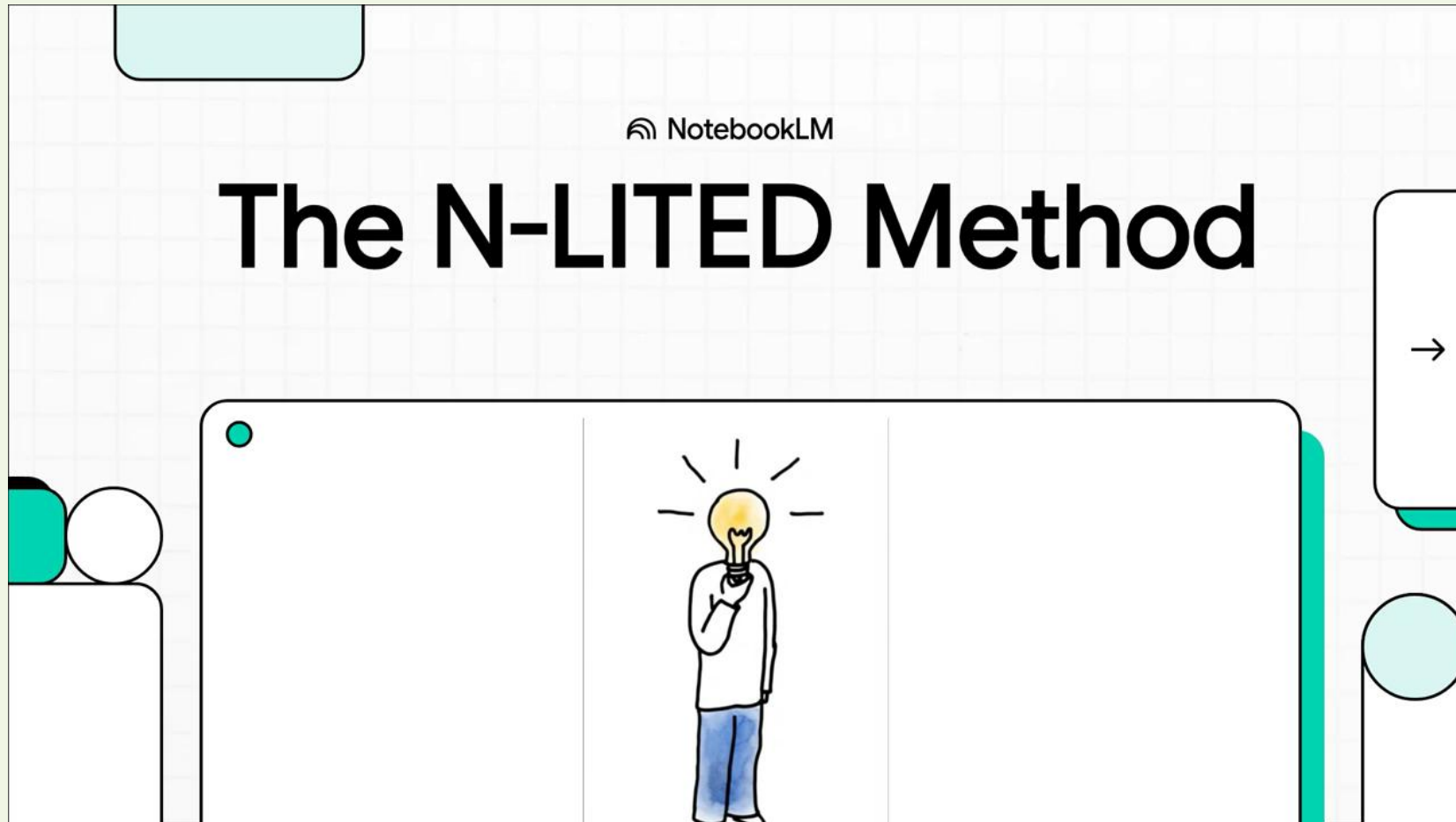
SuB Enhed for
Specialundervisning
og Beskæftigelse

WELCOME TO N-LITED



- Welcome and Introduction
- Overview of the N-Lited Method using NotebookLM
- Presentation of the N-Lited Method Template and Supporting Materials
- Introduction to the N-Lited VR/AR headset
- Hands-on Testing and Demonstration

OVERVIEW OF THE N-LITED METHOD USING NOTEBOOKLM



KEY RESULTS N-LITED

Project Overview

- We have expanded the project across Denmark over the past 3 years.
- 7 centers have taken part.

Key Results from Evaluation:

- Staff have gained stronger skills in lighting and feel more confident.
- The method gives structure and clarity.
- It is flexible and can be used in different ways.
- Support from leaders is important – they help set the framework.
- Citizens are very satisfied with the results.



TOOLS TO SUPPORT QUALITY AND CONSISTENCY



To standardize and ensure the same offer and quality across the country, we have developed:

- A template
- Tutorials
- Work documents
- A light suitcase

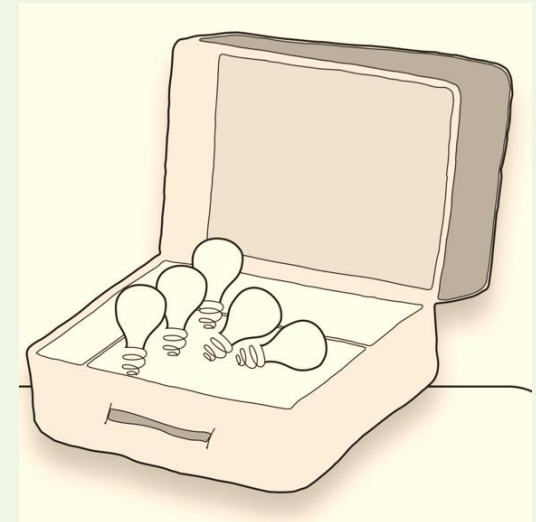
The light suitcase can be used in places without a light room, or when a person cannot transfer knowledge from the light room to their own home.

The template, tutorials, and checklists are all free and available to everyone.

THE LIGHT SUITCASE



- The light suitcase makes it possible to compare different light sources directly in real environments.



THE LIGHT SUITCASE



TEMPLATE AND SUPPORTING MATERIALS

www.sub.slagelse.dk

Search: N-Lited

Choose: Projekter

Choose: Værktøjer

The screenshot shows a web browser window with the URL sub.slagelse.dk/da/til-fagprofessionelle/projekter/. The page content is organized into several sections:

- SIDENS INDHOLD:** A navigation menu with items: **Nyhedsbreve** (dropdown), **Værktøjer til N-lited** (dropdown), **Manual til N-lited** (dropdown), **N-lited Skabelon** (dropdown), **N-lited Anbefalinger** (dropdown), **N-lited Tjekliste lysrum** (dropdown), and **Prisliste N-lited Brille** (dropdown).
- Igangværende projekt:** A section header.
- Nyhedsbreve N-lited:** A sub-section with a bullet point for **Værktøjer til N-lited**.
- Evalueringer:** A section header with two items:
 - Midtvejsevaluering N Lited** (PDF, 4 MB) with a download icon.
 - Slutevaluering Nlited Webtil** (PDF, 5 MB) with a download icon.

THE TEMPLATE



- The template helps create structure.
- If you follow the template, you are using the method.
- It can also be used for writing notes in the journal.
- It is not required, but it is a helpful support.

BASIC KNOWLEDGE FIRST



- To fully understand the method, we recommend having basic knowledge about light.

We offer two separate courses:

- One on basic lighting knowledge
- One on how to use the method
- Courses are planned based on demand.

WHY DID WE DEVELOP A VR/AR HEADSET FOR VISION SIMULATION?



- It is a good supplement to other ways of simulating vision loss
- It helps people experience vision changes in a very realistic way
- We use Meta Quest 3 and a Samsung tablet to run the simulations

TECHNOLOGY FEATURES



- VR/AR: Create realistic experiences
- Tablet control: Easy and flexible operation
- Combine different vision challenges

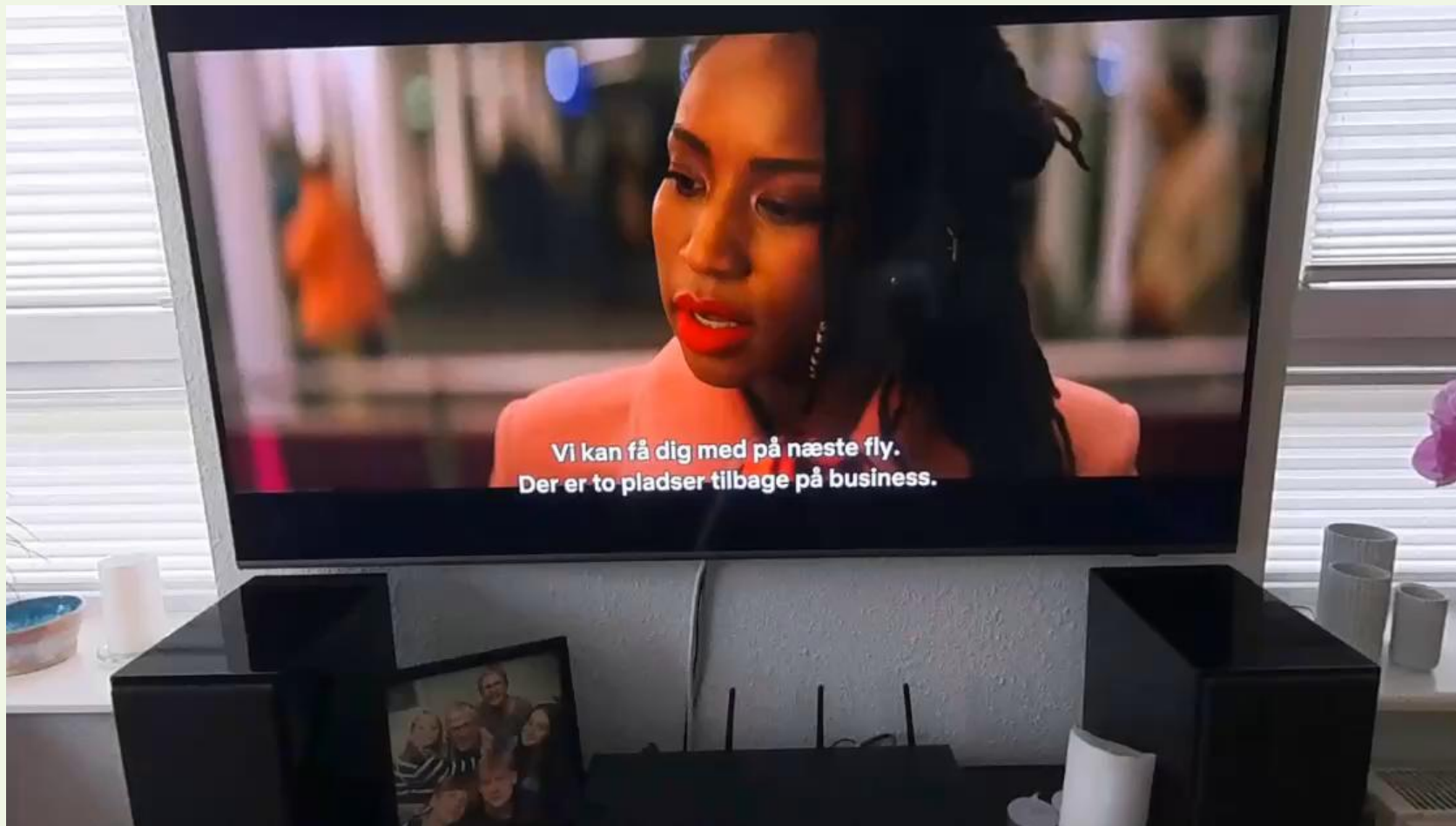


COMMUNICATION & INCLUSION TOOLS



- VR/AR or video: Show lighting effects in a realistic and engaging way
- Relatives – children and adults: Involve family members in the experience
- Meetings – schools, workplaces, professionals: Use in different settings to support dialogue and understanding

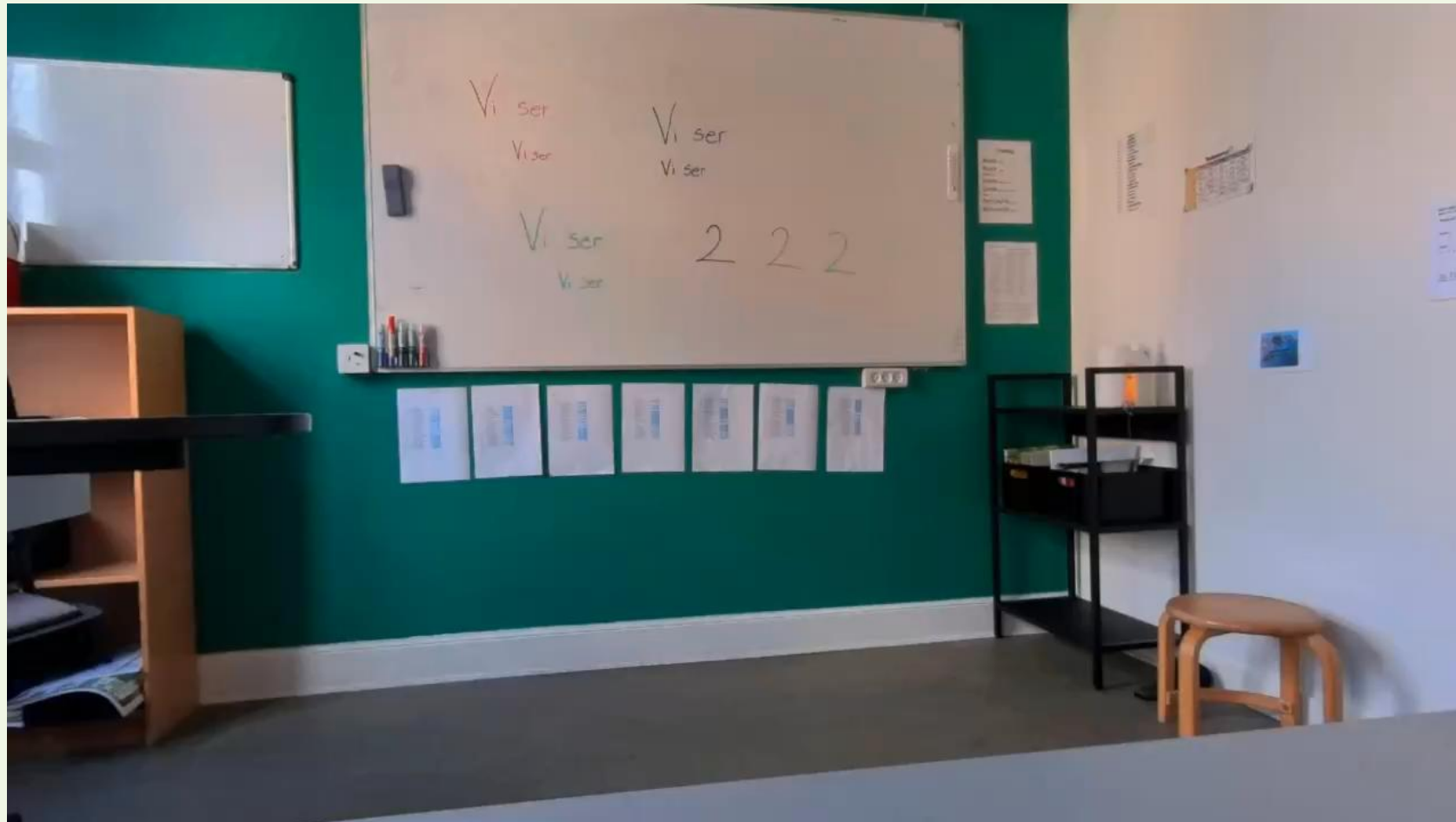
AGE-RELATED MACULA DEGENERATION (AMD)



GLAUCOMA



ACHROMATOPSIA



AVAILABLE FOR PURCHASE



- If you're interested in learning more, you're welcome to contact us by email sitot@slagelse.dk and anmja@slagelse.dk. You can find the price list by scanning the QR code
- Still in Development
You can help shape the future – the concept is not static and continues to devolve.



QR code for pricelist